

Technical parameters

Use for temperature range	up to +85 °C
Thermal conductivity λ according to EN 12667 (DIN 52612)	0.031 W/(m-K) at -20 °C 0.033 W/(m-K) at 0 °C 0.035 W/(m-K) at +20 °C
Thermal conductivity λ according to L10 EN 12667 (DIN 52612)	0.037 W/(m-K) at +40 °C
Flammability according to ČSN 73 0862	B - not easily flammable
Corrosion risks	DIN 1988/7, pH neutral
Coefficient of resistance against water vapour diffusion μ EN 12086 (DIN 52615)	$\mu \geq 7000$

K-FLEX® ST DUCT & KRAFT

K-FLEX® ST DUCT & KRAFT is an insulating material on the basis of synthetic rubber, suitable for insulating components of air-conditioning and ventilating systems. The rubber sheet is designed as an alternative to mineral wool application. It brings new benefits for technological management of buildings in the form of easier installation and extension of service life of insulation of air-handling systems. As opposed to standard fibre-based insulating materials, the insulating sheet K-FLEX® ST DUCT & KRAFT is made with the closed cell structure. Thanks to this design, it provides the advantage of thinner insulating layer and the possibility of applying the insulation piping already before installation of the piping - pre-insulated parts (shaped pieces).

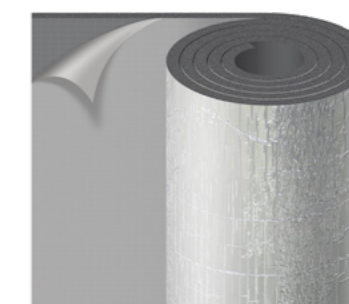
- financial savings, reduction in the costs of air-handling system insulation
- complies with fire-safety requirements on air-handling ducts
- quick and simple installation without the need to use any expensive tools
- self-adhesive version with an increased adhesion to metals
- installation without cutting through the material, thanks to the width of the insulating sheet of 150 cm
- fibres are not released from the material
- HCFC - CFC-free, formaldehyde-free

ASSORTMENT OF DIMENSIONS – K-FLEX® ST DUCT and KRAFT are supplied in rolls with the width of 1.5 m, packaged in polyethylene bags

Thickness (mm)	Quantity in a box (m ²)
6	45
10	30
12	22,5
15	18
20	15



ST Duct self-adhesive sheet, grey



KRAFT self-adhesive sheet, grey with the silver METAL foil surface finish